

* Tuwei has the right to change of the appeal content and the final interpretation.

TUWEI™

TUWEI PIPE MACHINERY

www.cntuwei.com



TUWEI™

TAIZHOU HUANGYAN TUWEI
CONSTRUCTION EQUIPMENTS CO.,LTD

Add: No.22 Beiyuan Ave., Beicheng Development Zone,
Huangyan, Taizhou, Zhejiang, China

Tel: 0086-576-84715288
Fax: 0086-576-84715289

E-mail: yang@cntuwei.com
Http://www.cntuwei.com

2016 catalogue



COMPANY PROFILE

Taizhou Huangyan Tuwei Construction Equipments CO., LTD was established in 2004. TUWEI is the first company who is committed to develop and manufacture the quick connection tools of pipelines in zhejiang province. In the past decade, TUWEI has become the leading high technology company in the industry of quick connection pipe tools.

TUWEI has been identified as state-level high-tech enterprises in 2010. In the same year TUWEI municipal high and new technology research and development center was founded. We always pay special attention to independent research and development of new products, serious product quality and good after-sales services. Sales network of TUWEI cover all of domestic and abroad. More than 50% of our products have been exported to Europe, America, southeast Asia and the Middle East.

The company always follow the faith : Survive by good quality. Develop by keeping good credit. We will always try our best to provide our best and most suitable products to customers. The developing TUWEI needs your more support and let's stride forward!



EQUIPMENT

The leading edge of manufacturing line, clean working site, orderly production process and prompt availability of technical support ensure reliable high quality. In the past decade huge investment has been used for upgrading workshop and production equipment.





PRODUCTION LINE

Tuwei is ISO9001:2008 certified company. We got the CE certifications of all the exported products. In the past decade, TUWEI developed many different kinds and models of the roll grooving machine, pipe cutting machine, hole cutting machine. With Advanced processing equipments, perfect detections, strong technical team and very long time production experience and scientific management mode TUWEI develop continuously. We have become the famous brand and nominated supplier of some the big groups in the tools industry.

TUWEI™
TUWEI PIPE MACHINERY





OUR TEAM

All Tuwei people have only one common idea: To make Tuwei best, to provide best products, best service.

CONTENT



ROLL GROOVING MACHINE

09~24



PIPE CUTTING MACHINE

25~31



HOLE CUTTING MACHINE

32~35



PIPE THREADING MACHINE

36~40



**PIPE BENDING MACHINE
& TEST PUMP**

41~46



Specifications

Capacity
 2"-12" (Ø 60-Ø 325)SCH40 steel pipe
 2"-12" (Ø 60-Ø 325)SCH10S SCH5S SCH10 SCH5 thin wall steel pipe
Max. wall thickness: 10mm
Output RPM : 23rpm
G.W: 158kgs
Packaging size: 78x70x92(cm)

TWG-IIA
ROLL GROOVING MACHINE

- This machine is designed for grooving 2"-12" steel pipe
- Powered by high-performance gear reducing motor contributing to compact size and low noise
- Unique integral hydraulic pump structure and groove depth limitation device ensure high quality grooves and high working efficiency



ROLL GROOVING MACHINE

TWG-IIA	10
TWG-IIA-B	11
TWG-IIA-P	12
TWG-IVA	13
TWG-IVZ	14
TWG-VA-R	15
TWG-VIA	16
TWG-VIIA	17
TWG-ST	18
TWG-8A	19
TWG-9A	20
TWG-10A	21
TWG-11A	22

Optional Equipment

*For SCH10S SCH5S SCH10 SCH5 thin wall steel pipe

Art.No.	Description	N.W(kgs)
09.03.009	thin-wall knurl wheel Φ60-Φ76	0.55
09.03.010	thin-wall knurl wheel Φ89-Φ168	1.28
09.03.011	thin-wall knurl wheel Φ219-Φ325	1.43



Art.No.	Phase	Voltage	Frequency
08.01.002.01	single phase	110/120/220/230/240V	50/60HZ
08.01.002.02	Three phase	220/380/415/440V	50/60HZ

Standard Equipment

*For SCH40 steel pipe

Art.No.	Description	N.W(kgs)	Ref No.
09.02.031	Pipe stand	18	(2)
03.01.01.016	Knurl wheel Φ60-Φ76	0.545	(3)
03.01.01.015	Knurl wheel Φ89-Φ168	1.265	(4)
03.01.01.014	Knurl wheel Φ219-Φ325	1.415	(5)
03.01.01.026	Pinch roller Φ60-Φ168	0.885	(6)
03.01.01.025	Pinch roller Φ219-Φ325	0.85	(7)

*Reminding: Please select TWG-IVA if groove large number of 12 inch pipes

TWG-IIA-B

ROLL GROOVING MACHINE

- This machine is designed for grooving 2"-12" steel pipe
- Powered by high-performance gear reducing motor contributing to compact size and low noise
- The unique integral hydraulic pump structure and groove depth limitation device ensure high quality grooves and high working efficiency
- Equipped with a humanized armrest to facilitate moving the machine

Specifications

Capacity
 2"-12" (Ø 60-Ø 325)SCH40 steel pipe
 2"-12" (Ø 60-Ø 325)SCH10S SCH5S SCH10 SCH5 thin wall steel pipe
Max. wall thickness: 10mm
Output RPM : 23rpm
G.W: 163kgs
Packaging size: 78×70×92(cm)

www.cntuwei.com



Art.No.	Phase	Voltage	Frequency
08.01.003.01	single phase	110/120/220/230/240V	50/60HZ
08.01.003.02	Three phase	220/380/415/440V	50/60HZ

Standard Equipment

*For SCH40 steel pipe

Art.No.	Description	N.W(kgs)	Ref No.
09.02.031	Pipe stand	18	(2)
03.01.01.016	Knurl wheel Φ60-Φ76	0.545	(3)
03.01.01.015	Knurl wheel Φ89-Φ168	1.285	(4)
03.01.01.014	Knurl wheel Φ219-Φ325	1.415	(5)
03.01.01.028	Pinch roller Φ60-Φ168	0.885	(6)
03.01.01.025	Pinch roller Φ219-Φ325	0.85	(7)
09.02.032	Foot switch	1.2	(8)

*Reminding: Please select TWG-IVA if groove large number of 12 inch pipes



Optional Equipment

*For SCH10S SCH5S SCH10 SCH5 thin wall steel pipe

Art.No.	Description	N.W(kgs)
09.03.009	thin-wall knurl wheel Φ60-Φ76	0.55
09.03.010	thin-wall knurl wheel Φ89-Φ168	1.28
09.03.011	thin-wall knurl wheel Φ219-Φ325	1.43

TWG-IIA-P

ROLL GROOVING MACHINE

- This machine is designed for grooving 2"-12" plastic-lining steel pipe
- Unique integral hydraulic pump structure and adjustable stroke limitation device ensure easy, accurate and high performance working
- Equipped with result-oriented design of rollers ensure the plastic lining no damage after grooving operation

Specifications

Capacity
 2"-12" (Ø 60-Ø 325)SCH30 plastic-lining steel pipes
Max. wall thickness: 8mm
 (Excluding the thickness of plastic-lining)
Output RPM : 23rpm
G.W: 180kgs
Packaging size: 78×72×92(cm)



Art.No.	Phase	Voltage	Frequency
08.01.004.01	single phase	110/120/220/230/240V	50/60HZ
08.01.004.02	Three phase	220/380/415/440V	50/60HZ

Standard Equipment

*For SCH30 plastic-lining steel pipes

Art.No.	Description	N.W(kgs)	Ref No.
09.02.031	Pipe stand	18	(1)
03.01.04.004	Knurl wheel Φ60-Φ89	0.535	(2)
03.01.04.003	Knurl wheel Φ108-Φ140	2.485	(3)
03.01.04.001	Knurl wheel Φ159-Φ168	5.945	(4)
03.01.04.002	Knurl wheel Φ219-Φ325	5.71	(5)
03.01.04.010	Pinch roller Φ60-Φ168	1.065	(6)
03.01.04.011	Pinch roller Φ219-Φ325	1.075	(7)



TWG-IVA

ROLL GROOVING MACHINE

- This machine is designed for grooving 8"-24" steel pipe. It's specified tool for the connection of heavy duty couplings and grooved pipes.
- Equipped with new hydraulic pump and stroke limitation devices to make the depth of grooves more precisely and effectively
- Powered by high-performance gear reducing motor, equipped with the guide wheel unit ensures high quality grooves and high working efficiency
- Equipped with a foldable hydraulic steel pipe stand to make operation convenience and save labour

Specifications

Capacity
8"-24" (Ø 219-Ø 630)SCH40 steel pipe
Max. wall thickness: 13mm
Output RPM : 15rpm
G.W: 340kgs
Packaging size: 102×75×147(cm)



Art.No.	Phase	Voltage	Frequency
08.01.010	Three phase	220/380/415/440V	50/60HZ

Standard Equipment

*For SCH40 steel pipe

Art.No.	Description	N.W(kgs)	Ref No.
08.02.034	Pipe stand	55	(1)
03.01.06.020	Knurl wheel Φ219-Φ325	9	(2)
03.01.06.021	Knurl wheel Φ377-Φ426	8.675	(3)
03.01.06.022	Knurl wheel Φ480-Φ630	8.515	(4)
03.01.06.015	Pinch roller Φ219-Φ530	1.29	(5)
03.01.06.016	Pinch roller Φ630	1.32	(6)



Specifications

Capacity
8"-24" (Ø 219-Ø 630)SCH40 steel pipe
Max. wall thickness: 13mm
Output RPM : 15rpm
G.W: 490kgs
Packaging size: 107×85×168(cm)
98×98×63(cm)

TWG-IVZ

ROLL GROOVING MACHINE

- This machine is designed for grooving 8"-24" steel pipe.
- Equipped with Automatic hydraulic control system and auto-feeding to improve the efficiency.
- Semi-automatic process, more precise grooves and more efficient.
- Designed auto delay function to make every single groove depth very precise.
- Equipped with solid wheels at the bottom of the machine, it is easy to transport in different building sites



(7)Foot switch

(1)Pipe stand

Art.No.	Phase	Voltage	Frequency
08.01.012	Three phase	220/380/415/440V	50/60HZ

Standard Equipment

*For SCH40 steel pipe

Art.No.	Description	N.W(kgs)	Ref No.
09.02.036	Pipe stand	140	(1)
03.01.06.020	Knurl wheel Φ219-Φ325	9	(2)
03.01.06.021	Knurl wheel Φ377-Φ426	8.675	(3)
03.01.06.022	Knurl wheel Φ480-Φ630	8.515	(4)
03.01.06.015	Pinch roller Φ219-Φ530	1.29	(5)
03.01.06.016	Pinch roller Φ630	1.32	(6)
09.02.032	Foot switch	1.2	(7)



TWG-VA-R

ROLL GROOVING MACHINE

- This machine is designed for grooving 1"-6" steel pipe.
- Simple design of the carriage, easy to be assembled and transported
- Equipped with integral hydraulic pump and stroke limitation device to control the depth of grooves precisely and effectively



Art.No.	Phase	Voltage	Frequency
08.01.021.01	Single phase	110/120/220/230/240V	50/60HZ
08.01.021.02	Three phase	220/380/415/440V	50/60HZ

Standard Equipment

*For SCH40 steel pipe

Art.No.	Description	N.W(kgs)	Ref No.
09.02.040	Pipe stand	6.5	(1)
03.01.11.002	Knurl wheel Φ33-Φ48	0.895	(2)
03.01.11.003	Knurl wheel Φ57-Φ89	1.1	(3)
03.01.11.004	Knurl wheel Φ108-Φ168	1.605	(4)
03.01.11.005	Pinch roller Φ33-Φ48	0.685	(5)
03.01.11.006	Pinch roller Φ57-Φ168	0.46	(6)

*Reminding: Please select TWG-9A if groove large number of 6 inch pipes

Optional Equipment

*For SCH10S SCH5S SCH10 SCH5 thin wall steel pipe

Art.No.	Description	N.W(kgs)
09.03.042	thin wall Knurl wheel Φ33-Φ48	1.65
09.03.043	thin wall Knurl wheel Φ57-Φ89	1.115
09.03.044	thin wall Knurl wheel Φ108-Φ168	1.995

Specifications

Capacity
 1"-6" (Ø 33-Ø 168)SCH40 steel pipe
 1"-6" (Ø 33-Ø 168)SCH10S SCH5S SCH10 SCH5 thin wall steel pipe
Max. wall thickness: 6mm
Output RPM : 23rpm
G.W: 96kgs
Packaging size: 95×53×65(cm)



Specifications

Capacity
 1"-12" (Ø 33-Ø 325)SCH40 steel pipe
 1"-12" (Ø 33-Ø 325)SCH10S SCH5S SCH10 SCH5 thin-wall steel pipe
Max. wall thickness: 10mm
Output RPM : 36rpm
G.W: 280kgs
Packaging size: 144×78×125(cm)



Standard Equipment

*For SCH40 steel pipe

Art.No.	Description	N.W(kgs)	Ref No.
09.02.042	Pipe stand	20	(1)
03.01.12.005	Knurl wheel Φ33-Φ48	2.54	(2)
03.01.12.006	Knurl wheel Φ60-Φ89	3.255	(3)
03.01.12.007	Knurl wheel Φ108-Φ168	3.775	(4)
03.01.12.008	Knurl wheel Φ219-Φ325	3.95	(5)
03.01.12.016	Pinch roller Φ33-Φ48	1.425	(6)
03.01.12.017	Pinch roller Φ60-Φ89	1.435	(7)
03.01.12.018	Pinch roller Φ108-Φ168	0.91	(8)
03.01.12.019	Pinch roller Φ219-Φ325	0.9	(9)

*Reminding: Please select TWG-IVA if groove large number of 12 inch pipes

TWG-VIA

ROLL GROOVING MACHINE

- This machine is designed for grooving 1"-12" steel pipe
- The taper knurl wheels can be changed very easily
- The unique foldable carriage allows the machine been folded and moved by one person
- The split-type hydraulic system coupled with foot switch enables safer and easier operation



Art.No.	Phase	Voltage	Frequency
08.01.022.01	Single phase	110/120/220/230/240V	50/60HZ
08.01.022.02	Three phase	220/380/415/440V	50/60HZ

Optional Equipment

*For SCH10S SCH5S SCH10 SCH5 thin wall steel pipe

Art.No.	Description	N.W(kgs)
09.03.045	thin-wall Knurl wheel Φ33-Φ48	2.545
09.03.046	thin-wall Knurl wheel Φ60-Φ89	3.22
09.03.047	thin-wall Knurl wheel Φ108-Φ168	3.805
09.03.048	thin-wall Knurl wheel Φ219-Φ325	4.01

TWG-VIIIA

ROLL GROOVING MACHINE

- The new hydraulic pump system for quick feeding. Make the operation much more easily
- Different sized pinch rollers combined in one part, no need to undo the pinch rollers when grooving different sized pipes. Just by rotate the pinch roller part user can achieve the shift between different sized pinch rollers.
- Machine body equipped with quick lifting system, four wheels been controlled by one rod. It is very easy to move the machine

Specifications

Capacity
 1"-12" (Ø 33-Ø 325)SCH40 steel pipe
 1"-12" (Ø 33-Ø 325)SCH10S SCH5S SCH10 SCH5 thin-wall steel pipe
Max. wall thickness: 10mm
Output RPM : 36rpm
G.W: 250kgs
Packaging size: 117×76×155(cm)

www.cntuwei.com



(1) Pipe stand

Foot switch



(4) (3) (2) (7) (6) (5)

Optional Equipment

*For SCH10S SCH5S SCH10 SCH5 thin wall steel pipe

Art.No.	Description	N.W(kgs)
09.03.051	thin-wall Knurl wheel Φ33-Φ48	1.215
09.03.050	thin-wall Knurl wheel Φ60-Φ168	1.62
09.03.049	thin-wall Knurl wheel Φ219-Φ325	2.415

Art.No.	Phase	Voltage	Frequency
08.01.023.01	Single phase	110/120/220/230/240V	50/60HZ
08.01.023.01	Three phase	220/380/415/440V	50/60HZ

Standard Equipment

*For SCH40 steel pipe

Art.No.	Description	N.W(kgs)	Ref No.
09.02.042	Pipe stand	20	(1)
03.01.13.004	Knurl wheel Φ33-Φ48	1.215	(2)
03.01.13.003	Knurl wheel Φ60-Φ168	1.59	(3)
03.01.13.002	Knurl wheel Φ219-Φ325	2.37	(4)
03.01.13.021	Pinch roller Φ33-Φ48	0.41	(5)
03.01.13.020	Pinch roller Φ60-Φ168	0.48	(6)
03.01.13.019	Pinch roller Φ219-Φ325	0.525	(7)



(2) (3) (4) (5) (6)



(7) (8)

TWG-ST

ROLL GROOVING MACHINE

- This machine is designed for grooving stainless steel and carbon steel elbows and T-fittings.
- Vertical processing make the operation more convenient, grooves more precise.
- Special Knurl wheels for grooving different angled elbows which without straight ends
- The integrative design of power system and hydraulic system

Specifications

Capacity
 2"-6" (Ø 60-Ø 168)SCH40 elbows and T-fitting
Max. wall thickness: 8mm
Output RPM : 36rpm
G.W: 660kgs
Packaging size: 130×115×76(cm)



(1)

Art.No.	Phase	Voltage	Frequency
08.01.029	Three phase	220/380/415/440V	50/60HZ

Standard Equipment

Art.No.	Description	N.W(kgs)	Ref No.
03.01.17.006	Knurl wheel Φ60-Φ76	1.295	(2)
03.01.17.009	Knurl wheel Φ89-Φ102	0.455	(3)
03.01.17.011	Knurl wheel Φ108-Φ114	0.95	(4)
03.01.17.013	Knurl wheel Φ127-Φ141	1.94	(5)
03.01.17.015	Knurl wheel Φ152-Φ168	3.13	(6)
03.01.17.028	Pinch roller Φ60-Φ114	13.165	(7)
03.01.17.029	Pinch roller Φ140-Φ168	9.3	(8)

TWG-8A

ROLL GROOVING MACHINE

- This machine is designed for grooving 18" - 60" steel pipe.
- Automatic hydraulic system, automatic feed, automatic reset through the entire process which will increase working efficiency
- With solid and adjustable base, can adjust the height according to pipe size in order to get different center height, very suitable for grooving large diameter pipe

Specifications

Capacity
18"-60" (Ø 457-Ø 1524) steel pipe
Max. wall thickness: 12mm
Output RPM : 15rpm
G.W: 1300kgs
Packaging size: 240x100x273(cm)

Art.No.	Phase	Voltage	Frequency
08.01.024	Three phase	220/380/415/440V	50/60HZ

Standard Equipment

*For SCH40 steel pipe

Art.No.	Description	N.W(kgs)
03.01.18.003	AGS Knurl wheel 50" -60"	12.7
03.01.18.002	AGS Knurl wheel 40" -48"	12.7
03.01.18.001	AGS Knurl wheel 26" -38"	12.7
03.01.18.008	AGS Pinch roller 50" -60"	6.3
03.01.18.007	AGS Pinch roller 40" -48"	6.3
03.01.18.006	AGS Pinch roller 26" -38"	6.3



Art.No.	Phase	Voltage	Frequency
03.01.026.01	Single phase	110/120/220/230/240V	50/60HZ
03.01.026.02	Three phase	220/380/415/440V	50/60HZ

Standard Equipment

*For SCH40 steel pipe

Art.No.	Description	N.W(kgs)	Ref No.
09.02.051	Pipe stand	6.5	(1)
03.01.14.001	Knurl wheel Φ33-Φ48	1.55	(2)
03.01.14.002	Knurl wheel Φ57-Φ89	1.195	(3)
03.01.14.003	Knurl wheel Φ108-Φ168	1.775	(4)
03.01.14.004	Knurl wheel Φ219	1.635	(5)
03.01.14.016	Pinch roller Φ33-Φ48	1.12	(6)
03.01.14.015	Pinch roller Φ57-Φ168	0.76	(7)
03.01.14.014	Pinch roller Φ219	0.665	(8)



TWG-9A

ROLL GROOVING MACHINE

- The new model of roll grooving machine TWG - 9A, including working capacity of TWG-III A, TWG-VA and TWG-VA-R, it is more efficient and stable
- Equipped with stronger power and make rollers change quick and simple
- Equipped with the new designed folding carriage, it is simple to assemble and move it

Specifications

Capacity
1"-8" (Ø 33-Ø 219)SCH40 steel pipe
Max. wall thickness: 8mm
Output RPM : 23rpm
G.W: 82kgs
Packaging size: 75x41x72(cm)



TWG-10A

ROLL GROOVING MACHINE

- This machine is designed for automatic production line of steel pipes
- The electrical system, hydraulic system are controlled by computer with touch screen operation
- Achieve 100% automatic production after assembled with the steel pipe production line
- Output RPM of spindle is variable for different steel pipes improve the work efficiency greatly

Specifications

Capacity
2"-12" (Ø 60-Ø 325)SCH40 steel pipe and SCH30 plastic lining steel pipe

Max. wall thickness: 10mm

Output RPM : 45rpm

G.W: 1070kgs

Packaging size: 180x94x180(cm)

Art.No.	Phase	Voltage	Frequency
08.01.029	Three phase	220/380/415/440V	50/60HZ

Standard Equipment

*For SCH40 steel pipe

Art.No.	Description	N.W(kgs)
03.01.15.023	Knurl wheel Φ60-Φ89	1.9KGS
03.01.15.024	Knurl wheel Φ100-Φ168	4KGS
03.01.15.025	Knurl wheel Φ219-Φ325	10KGS
03.01.15.020	Pinch roller Φ60-Φ89	6.3KGS
03.01.15.021	Pinch roller Φ100-Φ168	4.3KGS
03.01.15.022	Pinch roller Φ219-Φ325	4.1KGS

*For SCH30 plastic-lining steel pipes

Art.No.	Description	N.W(kgs)
03.01.15.014	Knurl wheel DN 50	1.9KGS
03.01.15.013	Knurl wheel DN 65	2.4KGS
03.01.15.012	Knurl wheel DN 80	2.8KG
03.01.15.011	Knurl wheel DN 100	4KGS
03.01.15.010	Knurl wheel DN 125	2.9KGS
03.01.15.009	Knurl wheel DN 150	6.5KGS
03.01.15.008	Knurl wheel DN 200-300	10KGS
03.01.15.002	Pinch roller DN 50-80	6.3KGS
03.01.15.003	Pinch roller DN 100	4.3KGS
03.01.15.004	Pinch roller DN 125	4.1KGS
03.01.15.005	Pinch roller DN 150	3.4KGS
03.01.15.006	Pinch roller DN 200-300	3.3KGS



TWG-11A

ROLL GROOVING MACHINE

- This machine is a portable manual grooving machine
- Equipped with unique knurl wheels for grooving 3/4"-8" pipe
- Allow to be mounted to a RIDGID 300 power drive

Specifications

Capacity
3/4"-8" (Ø 27-Ø 219)SCH40 steel pipe

Max. wall thickness: 7mm

G.W: 13kgs

Packaging size: 25x15x25(cm)



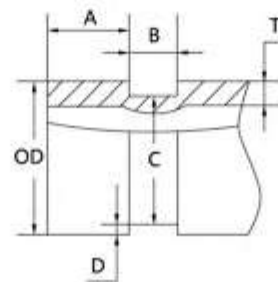
Standard Equipment

*For SCH40 steel pipe

Art.No.	Description	N.W(kgs)	Ref No.
08.01.030	Machine	10	(1)
03.01.19.004	Knurl wheel Φ27-Φ33	0.4	(2)
03.01.19.005	Knurl wheel Φ42-Φ48	0.5	(3)
03.01.19.006	Knurl wheel Φ60-Φ168	0.7	(4)
03.01.19.007	Knurl wheel Φ219	0.8	(5)
03.01.19.001	Pinch roller Φ27-Φ48	0.1	(6)
03.01.19.002	Pinch roller Φ60-Φ168	0.12	(7)
03.01.19.003	Pinch roller Φ219	0.12	(8)

GROOVE DIMENSIONS

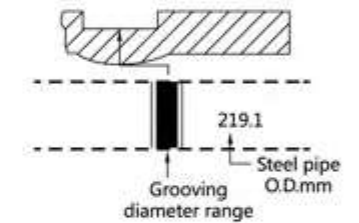
Pipe Outside Dia. O. D	Gasket Seat A±0.76	Grv-Width B±0.76	Groove Dia. - C		Groove Depth D	Min.Allow. Wall Thk. T	Max.Allow. Flare Dia.
			Basic	Tol.+0.00			
33.4	15.88	7.14	30.23	-0.38	1.60	1.65	36.3
42.2	15.88	7.14	38.99	-0.38	1.60	1.65	45.0
48.3	15.88	7.14	45.09	-0.38	1.60	1.65	51.1
60.3	15.88	8.74	57.15	-0.38	1.60	1.65	63.0
73.0	15.88	8.74	69.09	-0.46	1.98	2.11	75.7
76.1	15.88	8.74	72.26	-0.46	1.98	2.11	78.7
88.9	15.88	8.74	84.94	-0.46	1.98	2.11	91.4
101.6	15.88	8.74	97.38	-0.51	2.11	2.11	104.1
108.0	15.88	8.74	103.73	-0.51	2.11	2.11	110.5
114.3	15.88	8.74	110.08	-0.51	2.11	2.11	116.8
127.0	15.88	8.74	122.78	-0.51	2.11	2.41	129.5
133.0	15.88	8.74	129.13	-0.51	2.11	2.77	135.9
139.7	15.88	8.74	135.48	-0.51	2.11	2.77	142.2
141.3	15.88	8.74	137.03	-0.56	2.13	2.77	143.8
152.4	15.88	8.74	148.08	-0.56	2.16	2.77	154.9
159.0	15.88	8.74	154.68	-0.56	2.16	2.77	161.3
165.1	15.88	8.74	160.78	-0.56	2.16	2.77	167.6
168.3	15.88	8.74	163.96	-0.56	2.16	2.77	170.9
203.2	19.05	11.91	198.53	-0.64	2.34	2.77	207.5
218.3	19.05	11.91	211.60	-0.64	2.34	2.77	220.7
219.1	19.05	11.91	214.40	-0.64	2.34	2.77	223.5
254.0	19.05	11.91	249.23	-0.69	2.39	3.40	258.3
267.4	19.05	11.91	262.60	-0.69	2.39	3.40	271.8
273.0	19.05	11.91	266.28	-0.69	2.39	3.40	277.4
304.8	19.05	11.91	299.24	-0.76	2.77	3.98	309.1
318.5	19.05	11.91	312.90	-0.76	2.77	3.98	322.8
323.9	19.05	11.91	318.29	-0.76	2.77	3.98	328.2
355.8	23.83	11.91	350.04	-0.76	2.77	3.98	359.7
377.0	23.83	11.91	371.12	-0.76	2.94	4.50	381.0
381.0	23.83	11.91	375.44	-0.76	2.77	4.19	285.1
406.4	23.83	11.91	400.84	-0.76	2.77	4.19	410.5
426.0	23.83	11.91	419.46	-0.89	3.27	4.50	430.0
457.0	25.40	11.91	451.64	-0.76	2.77	4.19	461.3
480.0	25.40	11.91	473.10	-0.89	3.45	6.00	484.1
508.0	25.40	11.91	502.44	-0.76	2.77	4.78	512.1
530.0	25.40	11.91	522.53	-0.89	3.73	6.00	534.2
559.0	25.40	12.70	550.06	-0.76	4.37	4.78	563.9
610.0	25.40	12.70	600.86	-0.76	4.37	5.54	614.7
630.0	25.40	12.70	621.26	-0.89	4.37	7.00	635.0



The grooved pipe ends

π Ruler

π ruler is a tool to measure the diameter of circular pipe in a simple, easy and accurate way. π ruler is very useful in checking the depth of a groove. π ruler is a necessity for pipe installation.



Drilling position indicator

- This position indicator is suitable for square drilling operation. Ensure 2 holes are in the same level of surface.
- With magnetism "V" type pointer, can locate the center of the hole.

